



**27M FERRY**  
FERRY 240 PASSENGER

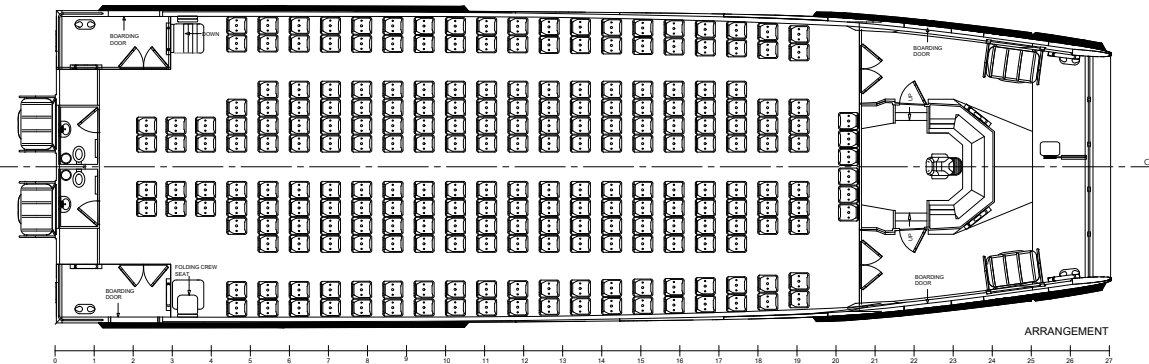
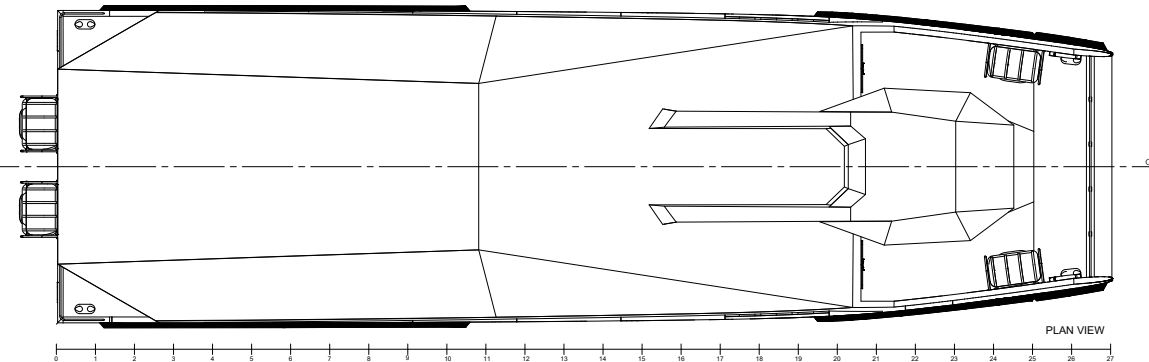
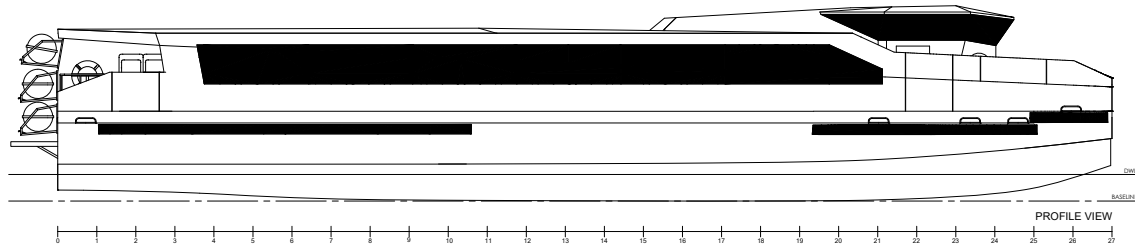
**NAUTIC**<sup>®</sup>

[www.nauticafrica.com](http://www.nauticafrica.com)



# 27M FERRY

## FERRY 240 PASSENGER



PARTICULARS	
Hull	Composite
Wheelhouse	Composite
Length (LOA)	27 m
Beam (BOA)	8.0 m
Draft	0.95 m
Displacement (Max)	52 T
Air Draught	3.9 m
PERFORMANCE	
Max Speed	13 knots
Cruise Speed	10 - 12 knots
Range	300 nm @ 12 knots
PROPULSION	
Engines	2 x Volvo Penta D7A TA
Propulsion	2 x Propeller & Rudder
Power	2 x 148 kW @ 2300 rpm
CAPACITIES	
Fuel Oil	2 000 L
Fresh Water	500 L
Waste Water	500 L
Complement	4 Crew + 240 Passengers
ELECTRICAL	
Power Supply	230 VAC, 24 VDC
Genset	1 x 27 kVA
Air Conditioning	Chilled water system
NAVIGATION AND COMMUNICATION	
VHF Radio	
Echo Sounder	
OPTIONS PASSENGER ARRANGEMENTS	
200 Passengers	160 Economy, 40 Business
140 Passengers	140 Business